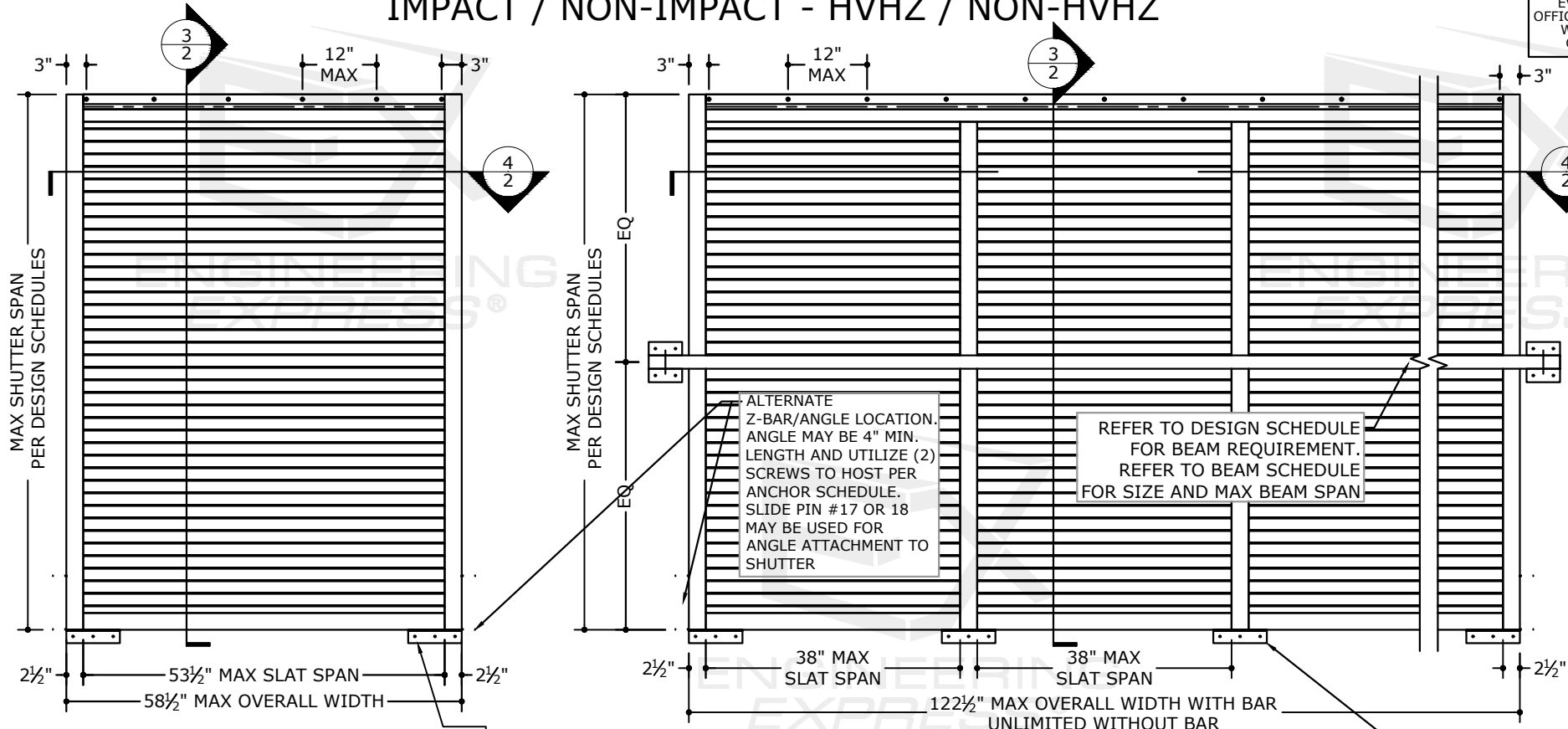


TOWN & COUNTRY INDUSTRIES

FULLVIEW & ULTRAVIEW BAHAMA SHUTTER - PATENT #8126298 & 8136298B1

IMPACT / NON-IMPACT - HVHZ / NON-HVHZ



1 SINGLE PANEL SPAN
1 N.T.S. EXTER. ELEVATION

2 MULTI PANEL SPAN
1 N.T.S. EXTER. ELEVATION



IN LIEU OF Z-BAR/ANGLE CLIPS, A 1"x2"x1/8" CONTINUOUS ALUM ANGLE MAY BE USED AT FULL LENGTH OF SHUTTER SILL ATTACHED TO HOST WITH SCREWS AT 12" O.C. PER ANCHOR NOTE 1 SCHEDULE. ANGLE SHALL ATTACH TO SHUTTER W/ #12 MIN. SAE GR 5 OR SS SMS AT 12" O.C., TYP

NOTE REGARDING USE OF THIS DOCUMENT & USE OUTSIDE FLORIDA:
NON-SITE-SPECIFIC STRUCTURAL PERFORMANCE EVALUATION. THIS PRODUCT EVALUATION IS VALID FOR USE IN FLORIDA ONLY. USE OF THIS EVALUATION REQUIRES A REVIEW & CERTIFICATION BY A LOCAL DESIGN PROFESSIONAL WHO SHALL BE RESPONSIBLE FOR THE PROPER ADAPTATION OF THIS GENERAL PERFORMANCE EVALUATION TO ANY SITE-SPECIFIC PROJECT. CONTACT THIS OFFICE AT ENGINEERINGEXPRESS.COM/QUOTE FOR ASSISTANCE WITH YOUR PROJECT-SPECIFIC NEEDS & FOR ADAPTATION & CERTIFICATION OF THIS DOCUMENT OUTSIDE OF FLORIDA.

COLBY BENNARDO, PE
PE# 95197 CA# 9885

AUGUST 16, 2023

GENERAL NOTES

- THE SYSTEM DESCRIBED HEREIN HAS BEEN DESIGNED AND TESTED IN ACCORDANCE WITH THE FLORIDA BUILDING CODE EIGHTH EDITION (2023), FOR USE WITHIN THE HVHZ AND NON-HVHZ, AS WELL AS THE INTERNATIONAL BUILDING CODE (IBC) AND INTERNATIONAL RESIDENTIAL CODE (IRC). SEE PRODUCT EVALUATION REPORT FOR ADDITIONAL INFORMATION.
- POSITIVE AND NEGATIVE DESIGN PRESSURES CALCULATED FOR USE WITH THIS SYSTEM SHALL BE DETERMINED PER SEPARATE ENGINEERING IN ACCORDANCE WITH THE GOVERNING CODE. PRESSURE REQUIREMENTS AS DETERMINED IN ACCORDANCE WITH ASCE 7 AND CHAPTER 1609 OF THE FLORIDA BUILDING CODE EIGHTH EDITION (2023) SHALL BE LESS THAN OR EQUAL TO THE POSITIVE OR NEGATIVE DESIGN PRESSURE CAPACITY VALUES LISTED HEREIN FOR ANY ASSEMBLY AS SHOWN.
- DESIGN PRESSURES NOTED HEREIN ARE BASED ON MAXIMUM TESTED PRESSURES DIVIDED BY A 1.5 SAFETY FACTOR.
- THIS SYSTEM HAS BEEN DESIGNED WITH NO SEPARATION FROM GLAZING REQUIRED FOR ALL WIND ZONES, IN ACCORDANCE WITH ASTM 1996. IT IS ACCEPTABLE BY CODE UNLESS OPTIONAL CRITERIA IS INDEPENDENTLY ADOPTED BY THE AUTHORITY HAVING JURISDICTION.
- THE SYSTEM DETAILED HEREIN IS GENERIC AND DOES NOT PROVIDE INFORMATION FOR A SPECIFIC SITE. FOR SITE CONDITIONS DIFFERENT FROM THE CONDITIONS DETAILED HEREIN, A DESIGN PROFESSIONAL SHALL PREPARE SITE SPECIFIC DOCUMENTS FOR USE IN CONJUNCTION WITH THIS DOCUMENT.
- ENGINEER SEAL AFFIXED HERETO VALIDATE STRUCTURAL DESIGN AS SHOWN ONLY. USE OF THIS SPECIFICATION BY CONTRACTOR et. al. INDEMNIFIES & SAVES HARMLESS THIS ENGINEER FOR ALL COST & DAMAGES INCLUDING LEGAL FEES & APPELLATE FEES RESULTING FROM MATERIAL FABRICATION, SYSTEM ERECTION & CONSTRUCTION PRACTICES BEYOND THAT WHICH IS CALLED FOR BY LOCAL, STATE & FEDERAL CODES & FROM DEVIATIONS OF THIS PLAN.
- PERMIT HOLDER SHALL VERIFY THE ADEQUACY OF THE EXISTING STRUCTURE TO WITHSTAND SUPERIMPOSED LOADS. WOOD BUCKS (BY OTHERS) SHALL BE ANCHORED PROPERLY TO TRANSFER LOADS TO THE EXISTING STRUCTURE.
- SHUTTER MAY BE INSTALLED AS SINGLE PANEL OR AS MULTI-PANEL SPANS TO UNLIMITED WIDTH, SEE DETAIL 1/2 & 1/4 FOR MAXIMUM SLAT SPANS.
- ALL EXTRUSIONS SHALL BE 6063-T6 ALUMINUM ALLOY, UNLESS NOTED OTHERWISE. ALL TOLERANCES SHALL BE IN ACCORDANCE WITH ADM 2015.
- THIS SYSTEM MUST BE CLOSED AND LOCKED FOR WIND AND IMPACT PROTECTION. THIS SYSTEM HAS BEEN DESIGNED FOR A WIND PRESSURE OF 18 PSF IN THE OPEN POSITION. A PERMANENT LABEL MUST BE ADHERED TO THE UNDERSIDE OF EACH BAHAMA SHUTTER CONTAINING THE FOLLOWING:
SHUTTER AND LOUVERS TO BE CLOSED AND LOCKED WHEN HURRICANE WARNINGS ARE ISSUED

- BAHAMA SHUTTERS SHALL BE PERMANENTLY LABELED AS PRESCRIBED IN THE ABOVE-NOTED BUILDING CODE, IN ACCORDANCE WITH THE FLORIDA BUILDING COMMISSION AND THE FLORIDA DBPR SPECIFICATIONS.
- ALL BOLTS & WASHERS SHALL BE ZINC COATED STEEL, GALVANIZED STEEL, STAINLESS STEEL, OR 2024-T6 ALUMINUM ALLOY WITH A MINIMUM TENSILE YIELD STRENGTH OF 33 KSI.
- ALL CONCRETE ANCHORS TO BE INSTALLED TO NON-CRACKED CONCRETE ONLY.
- WIND LOAD DURATION FACTOR Cd=1.6 HAS BEEN USED FOR WOOD ANCHOR DESIGN.
- REFER TO FASTENER MANUFACTURER'S PUBLISHED DATA SHEETS AND RECOMMENDATIONS FOR FASTENER INSTALLATION INSTRUCTIONS.
- ALL STEEL IN CONTACT WITH ALUMINUM SHALL BE PAINTED OR PLATED AS PRESCRIBED IN THE ABOVE-NOTED BUILDING CODE.

- HVHZ (TABLE 1 & 2) NOTES:**
- HIGH VELOCITY HURRICANE ZONE (HVHZ) IS DEFINED AS MIAMI-DADE COUNTY AND BROWARD COUNTY FLORIDA ONLY.
 - TABLE 1 SHALL BE USED FOR INSTALLATIONS IN THE HIGH VELOCITY HURRICANE ZONE (HVHZ) TO DETERMINE THE MAXIMUM ALLOWABLE DESIGN PRESSURE FOR EACH SPAN.
 - FOR SPANS BETWEEN TABULATED VALUES USE NEXT HIGHER SPAN.
 - TABLE 2 SHALL BE USED TO DETERMINE MINIMUM SEPARATION FROM GLASS WITH IN THE HVHZ.

- NON-HVHZ (TABLE 3 & 4) NOTES:**
- NON-HVHZ IS DEFINED AS ALL LOCATIONS OTHER THAN MIAMI-DADE COUNTY AND BROWARD COUNTY FLORIDA.
 - TABLE 2 MAY BE USED FOR INSTALLATIONS OUTSIDE THE HIGH VELOCITY HURRICANE ZONE (HVHZ).
 - FOR SPANS BETWEEN TABULATED VALUES, USE NEXT HIGHER SPAN.
 - FOR INSTALLATIONS OUTSIDE THE HVHZ SEPARATION FROM GLASS IS NOT REQUIRED UNLESS LOCAL MUNICIPALITY ADOPTS ADDITIONAL CRITERIA.

TABLE 1 HVHZ

ALLOWABLE DESIGN PRESSURES

MAX SHUTTER SPAN	CONFIGURATION		
	SINGLE PANEL SPAN	W/O BEAM	W/ BEAM
69"	+60/-73 PSF	+60/-73 PSF*	+60/-73 PSF*
81 5/8"	+60/-73 PSF	-	+60/-73 PSF*
96 3/4"	+60/-73 PSF*	-	+60/-73 PSF*

*NOTE: LIMITED TO A MAX SLAT SPAN OF 38"

TABLE 2 HVHZ

MINIMUM SEPARATION FROM GLASS

MAX SHUTTER SPAN	DESIGN PRESSURE	CONFIGURATION		
		SINGLE PANEL SPAN	W/O BEAM	W/ BEAM
69"	+56/-73 PSF	2 3/8"	3"	2 3/8"
69"	+60/-73 PSF	2 3/8"	3 1/4"	2 3/8"
81 5/8"	+60/-73 PSF	2 3/8"	-	2 3/8"
96 3/4"	+60/-73 PSF	2 3/8"*	-	2 3/8"

*NOTE: LIMITED TO A MAX SLAT SPAN OF 38"

TABLE 3 NON-HVHZ

ALLOWABLE DESIGN PRESSURES

MAX SHUTTER SPAN	CONFIGURATION		
	SINGLE PANEL SPAN	W/O BEAM	W/ BEAM
69"	+78/-95 PSF	+78/-95 PSF*	+78/-95 PSF*
81 5/8"	+78/-95 PSF	+50/-50 PSF*†	+78/-95 PSF*
96 3/4"	+78/-95 PSF*	+50/-50 PSF*†	+78/-95 PSF*

*NOTE: LIMITED TO A MAX SLAT SPAN OF 38"
†NOTE: NOT APPROVED FOR USE IN ESSENTIAL FACILITIES.

TABLE 4 NON-HVHZ

NOT REQUIRED FOR WIND ZONES 1-3
MINIMUM SEPARATION FROM GLASS

MAX SHUTTER SPAN	DESIGN PRESSURE	CONFIGURATION		
		SINGLE PANEL SPAN	W/O BEAM	W/ BEAM
69"	+78/-95 PSF	3 3/8"	4 3/8"	2 7/8"
81 5/8"	+78/-95 PSF	3 3/8"	-	2 7/8"
96 3/4"	+78/-95 PSF	2 7/8"*	-	2 7/8"

*NOTE: LIMITED TO A MAX SLAT SPAN OF 38"

FL# 13434.1

ENGINEERING EXPRESS
POSTAL ADDRESS:
401 W. ATLANTIC AVE R10 BOX 219
DELRAY BEACH, FL 33444
ENGINEERINGEXPRESS.COM

Town & Country INDUSTRIES
Wholesale Aluminum and Building Products
400 WEST MCNAB ROAD, FT. LAUDERDALE, FL 33309
FULLVIEW & ULTRAVIEW BAHAMA SHUTTER
FLORIDA BUILDING CODE EIGHTH EDITION (2023)
FLORIDA STATEWIDE APPROVAL (FSA FL#13434.1)

REMARKS	DATE	DRWN	CHKD
2020 FBC (20-26176) FBC 2023	6/24/20 8/16/23	CCB	RWN
		MLD	CCB

23-64826

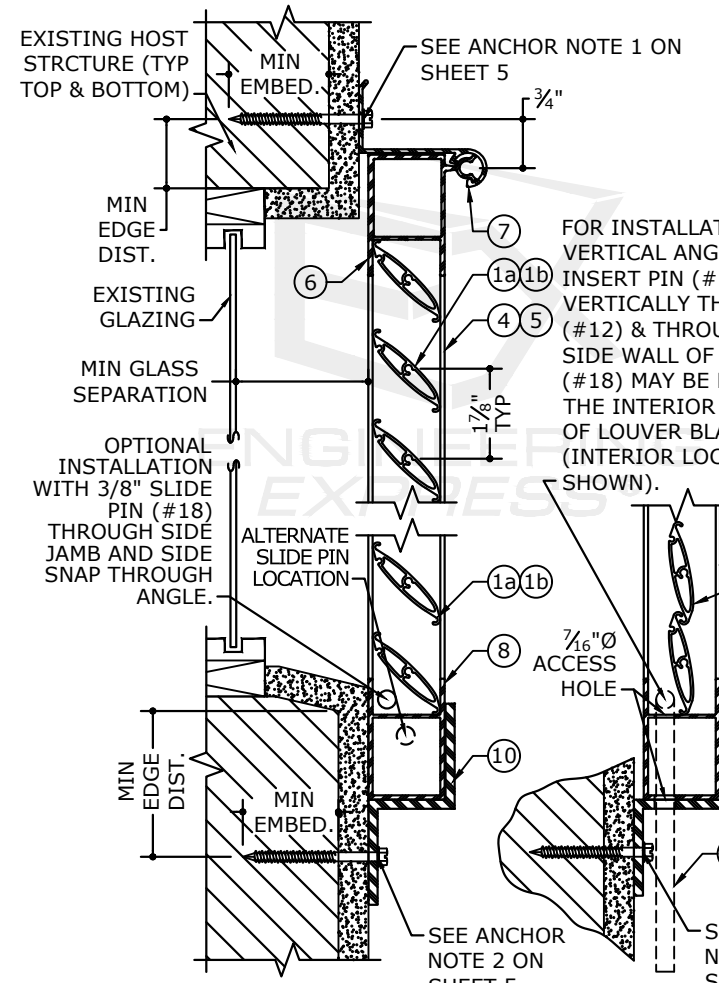
SCALE: NTS UNLESS NOTED

1 OF 6

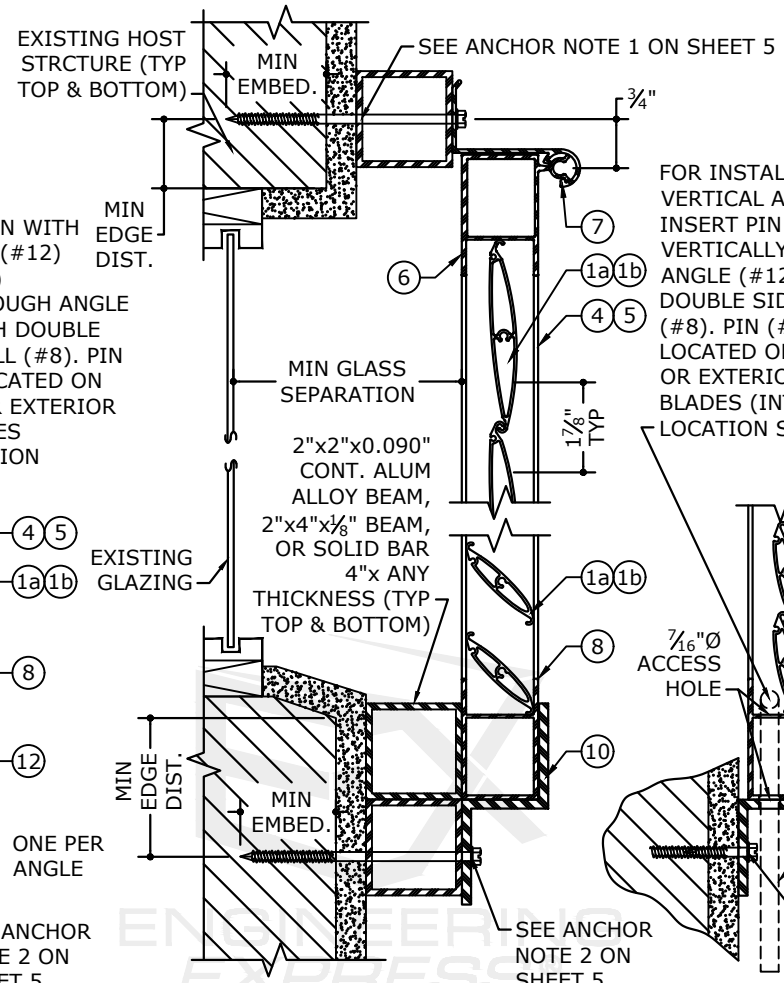
VISIT ECALC.IO/TOWNCOUNTRY
FOR SITE SPECIFIC DEVIATIONS & MORE INFORMATION ABOUT THIS DOCUMENT OR SCAN THIS QR CODE
VISIT ENGINEERINGEXPRESS.COM/STORE FOR ADDITIONAL PLANS, REPORTS & RESOURCES



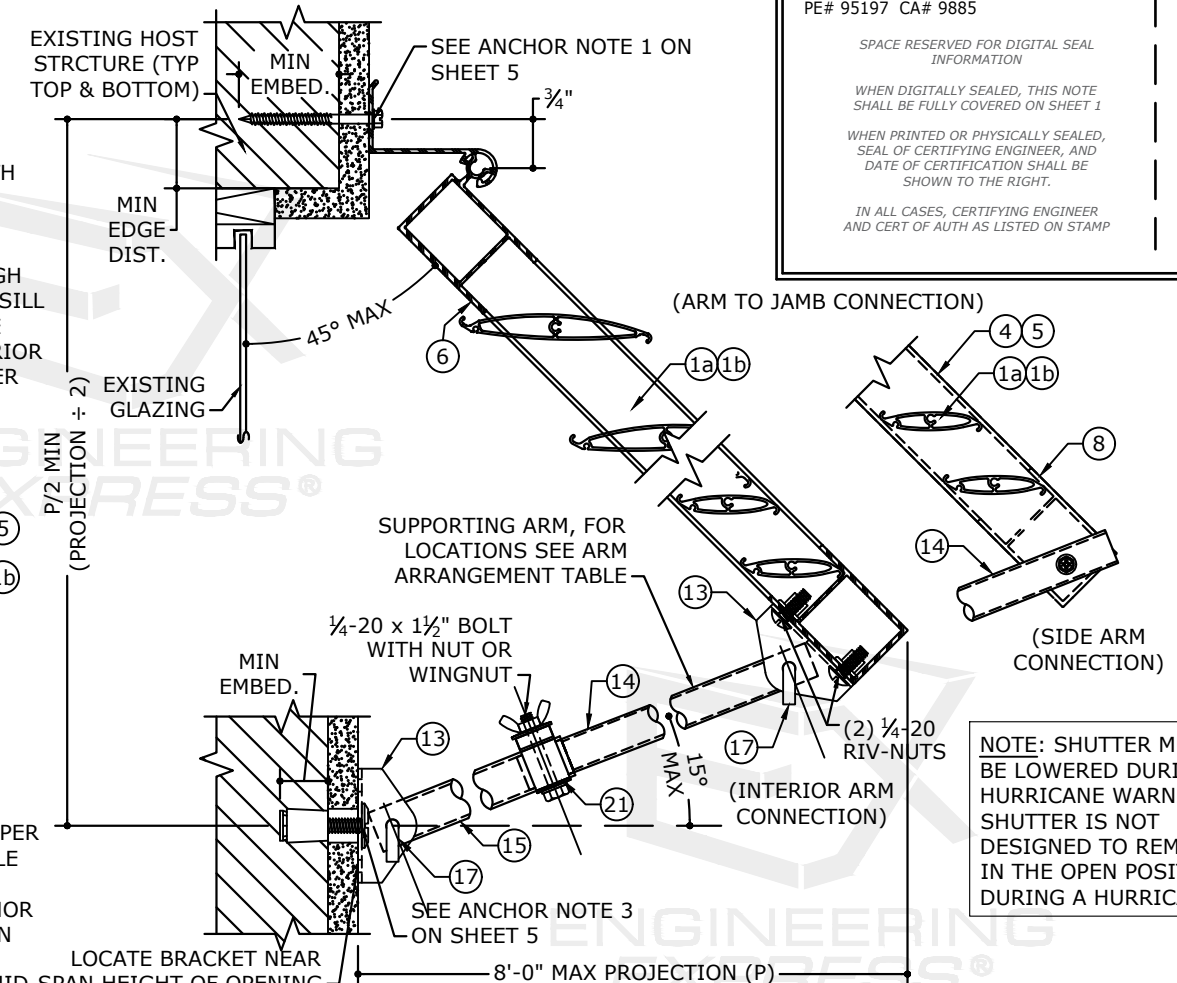
SPACE RESERVED FOR DIGITAL SEAL INFORMATION
WHEN DIGITALLY SEALED, THIS NOTE SHALL BE FULLY COVERED ON SHEET 1
WHEN PRINTED OR PHYSICALLY SEALED, SEAL OF CERTIFYING ENGINEER, AND DATE OF CERTIFICATION SHALL BE SHOWN TO THE RIGHT.
IN ALL CASES, CERTIFYING ENGINEER AND CERT OF AUTH AS LISTED ON STAMP



3a TYPICAL CLOSED POSITION
2 N.T.S. VERTICAL SECTION



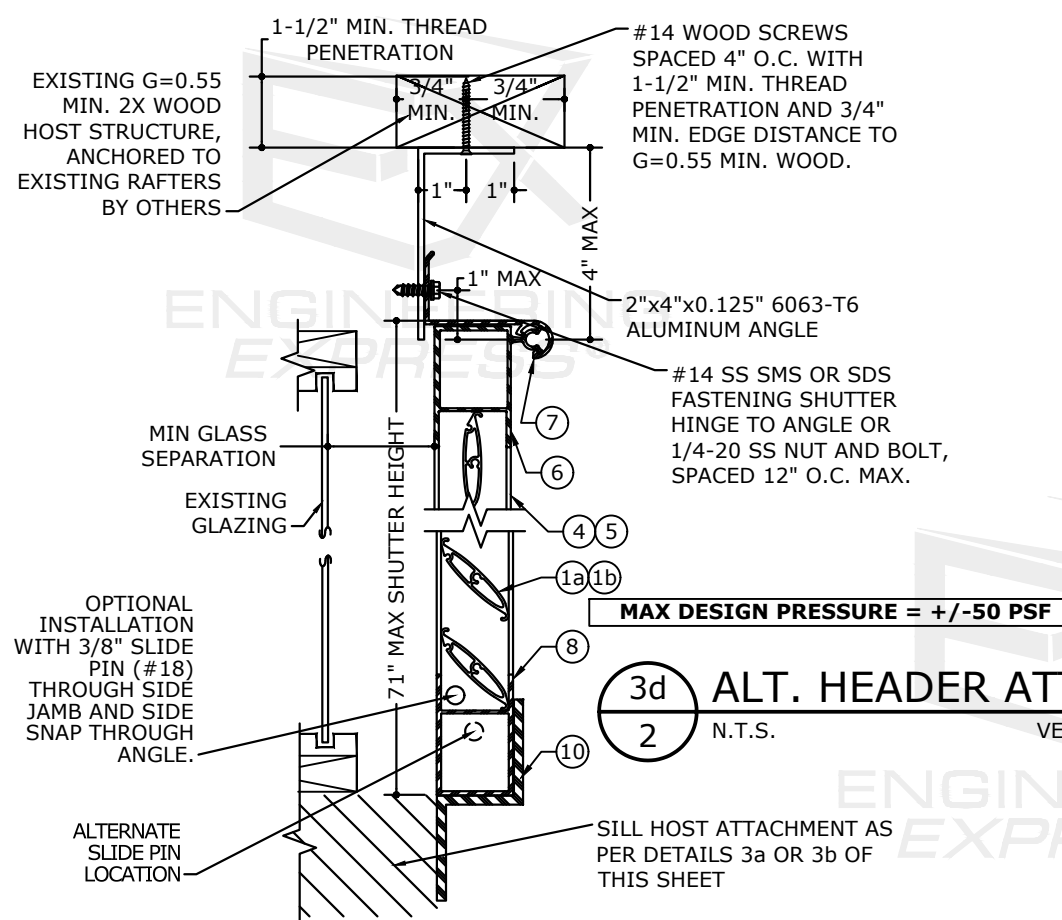
3b BUILD-OUT CLOSED POSITION
2 N.T.S. VERTICAL SECTION



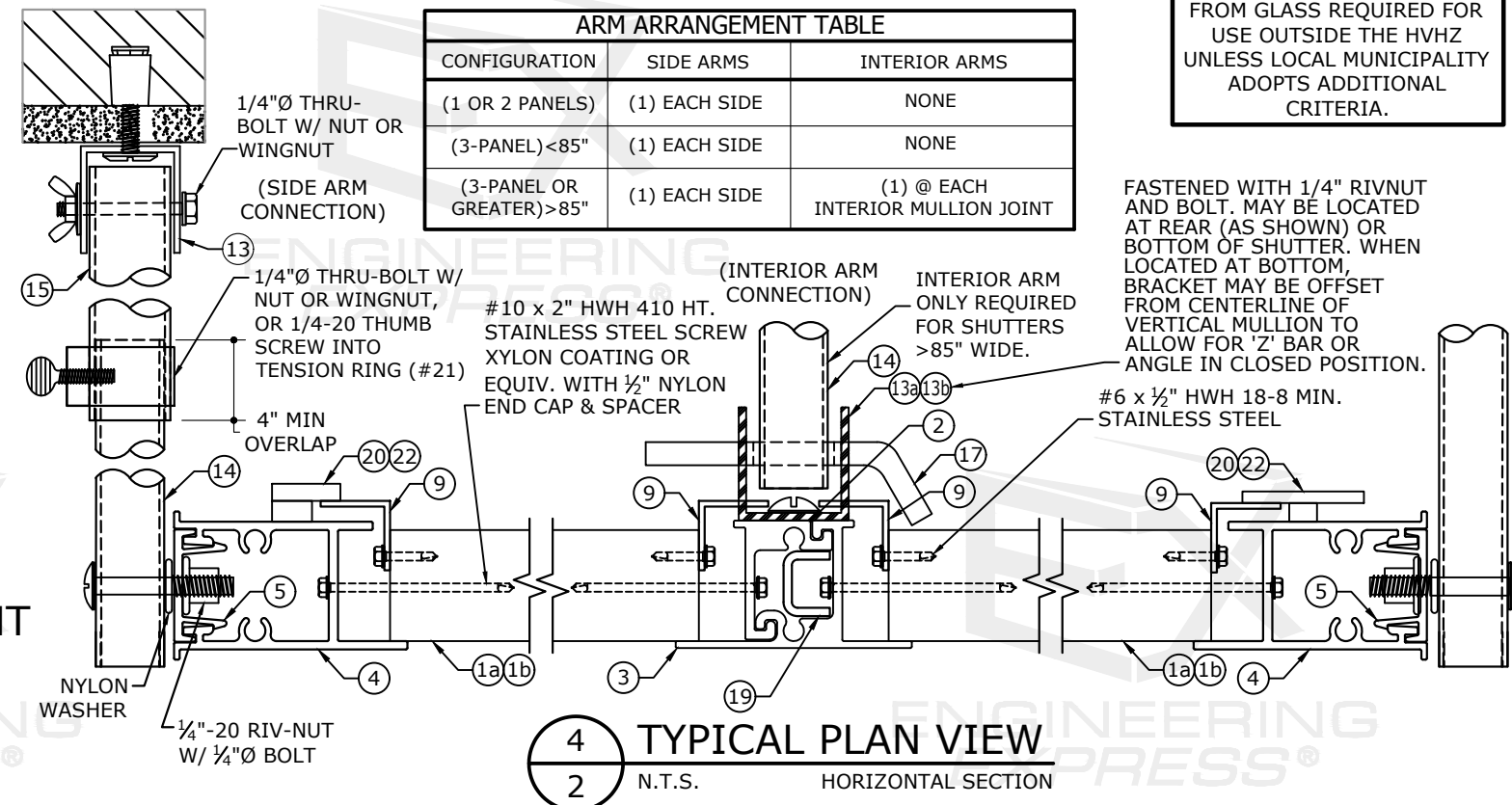
3c TYPICAL OPEN POSITION
2 N.T.S. VERTICAL SECTION

FOR INSTALLATION WITH VERTICAL ANGLE (#12) INSERT PIN (#18) VERTICALLY THROUGH ANGLE (#12) & THROUGH DOUBLE SIDE WALL OF SILL (#8). PIN (#18) MAY BE LOCATED ON THE INTERIOR OR EXTERIOR OF LOUVER BLADES (INTERIOR LOCATION SHOWN).

NOTE: SHUTTER MUST BE LOWERED DURING A HURRICANE WARNING. SHUTTER IS NOT DESIGNED TO REMAIN IN THE OPEN POSITION DURING A HURRICANE.



3d ALT. HEADER ATTACHMENT
2 N.T.S. VERTICAL SECTION



4 TYPICAL PLAN VIEW
2 N.T.S. HORIZONTAL SECTION

ARM ARRANGEMENT TABLE		
CONFIGURATION	SIDE ARMS	INTERIOR ARMS
(1 OR 2 PANELS)	(1) EACH SIDE	NONE
(3-PANEL) <85"	(1) EACH SIDE	NONE
(3-PANEL OR GREATER) >85"	(1) EACH SIDE	(1) @ EACH INTERIOR MULLION JOINT

NO MINIMUM SEPARATION FROM GLASS REQUIRED FOR USE OUTSIDE THE HVHZ UNLESS LOCAL MUNICIPALITY ADOPTS ADDITIONAL CRITERIA.

FASTENED WITH 1/4" RIVNUT AND BOLT. MAY BE LOCATED AT REAR (AS SHOWN) OR BOTTOM OF SHUTTER. WHEN LOCATED AT BOTTOM, BRACKET MAY BE OFFSET FROM CENTERLINE OF VERTICAL MULLION TO ALLOW FOR 'Z' BAR OR ANGLE IN CLOSED POSITION.

FL# 13434.1

ENGINEERING EXPRESS
POSTAL ADDRESS:
401 W. ATLANTIC AVE R10 BOX 219
DELRAY BEACH, FL 33444
ENGINEERINGEXPRESS.COM

Town & Country INDUSTRIES
Wholesale Aluminum and Building Products
400 WEST MCNAB ROAD, FT. LAUDERDALE, FL 33309
FULLVIEW & ULTRAVIEW BAHAMA SHUTTER
FLORIDA BUILDING CODE EIGHTH EDITION (2023)
FLORIDA STATEWIDE APPROVAL (FSA FL#13434.1)

DATE	DRWN	CHKD	DATE
6/24/20	CCB	RWN	8/16/23
	MLD	CCB	

REMARKS
2020 FBC (20-26176)
FBC 2023

23-64826

SCALE: NTS UNLESS NOTED

COLBY BENNARDO, PE
PE# 95197 CA# 9885

AUGUST 16, 2023

SPACE RESERVED FOR DIGITAL SEAL INFORMATION

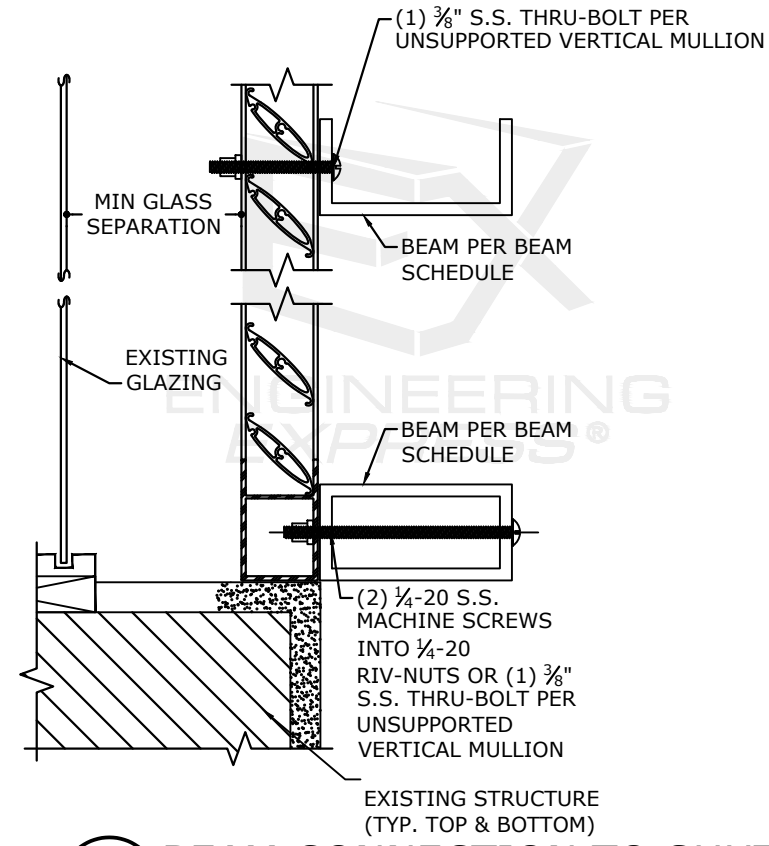
WHEN DIGITALLY SEALED, THIS NOTE SHALL BE FULLY COVERED ON SHEET 1

WHEN PRINTED OR PHYSICALLY SEALED, SEAL OF CERTIFYING ENGINEER, AND DATE OF CERTIFICATION SHALL BE SHOWN TO THE RIGHT.

IN ALL CASES, CERTIFYING ENGINEER AND CERT OF AUTH AS LISTED ON STAMP

WALL BRACKET ANCHORS TYPES:

- TYPE A:** ¼-20 ALL POINT SOLID SET ANCHORS:
 - IN CONCRETE (3.35KSI MIN) WITH 7/8" MIN EMBED. AND 3" MIN EDGE DIST.
 - IN HOLLOW CONCRETE BLOCK WITH 7/8" MIN EMBED. AND 3" MIN EDGE DIST.
- TYPE B:** ¼-20 DEWALT PANELMATES (MALE/FEMALE):
 - IN CONCRETE (3.35KSI MIN) WITH 1¾" MIN EMBED. AND 2½" MIN EDGE DIST.
 - IN HOLLOW CONCRETE BLOCK WITH 1¾" MIN EMBED. AND 2" MIN EDGE DIST.
 - IN WOOD (G=0.42 MIN) WITH 1½" MIN EMBED. AND ¾" MIN EDGE DIST.
- TYPE C:** ¼" EYEWALL ARMOR MALE OR FEMALE BOLTS:
 - IN CONCRETE (3.0KSI MIN) WITH 1¾" MIN EMBED. AND 2½" MIN EDGE DIST.
 - IN HOLLOW CONCRETE BLOCK WITH 1¾" MIN EMBED. AND 2" MIN EDGE DIST.
 - IN WOOD (G=0.42 MIN) WITH 1½" MIN EMBED. AND ¾" MIN EDGE DIST.
- TYPE D*:** ¼" MILLENNIUM MILLFAST W/ T&C ULTRACOTE:
 - IN CONCRETE (3.275KSI MIN) WITH 1¾" EMBED AND 2½" EDGE DIST.
 - IN HOLLOW CONCRETE BLOCK WITH 1½" EMBED. AND 2½" MIN EDGE DIST.
- TYPE E:** #12 SMS W/ 2" EYEWALL ARMOR NYLON INSERT:
 - IN CONCRETE (2KSI MIN) WITH 2" EMBED AND 2" EDGE DIST.
 - IN HOLLOW CONCRETE BLOCK WITH 1½" EMBED AND 2" EDGE DIST.

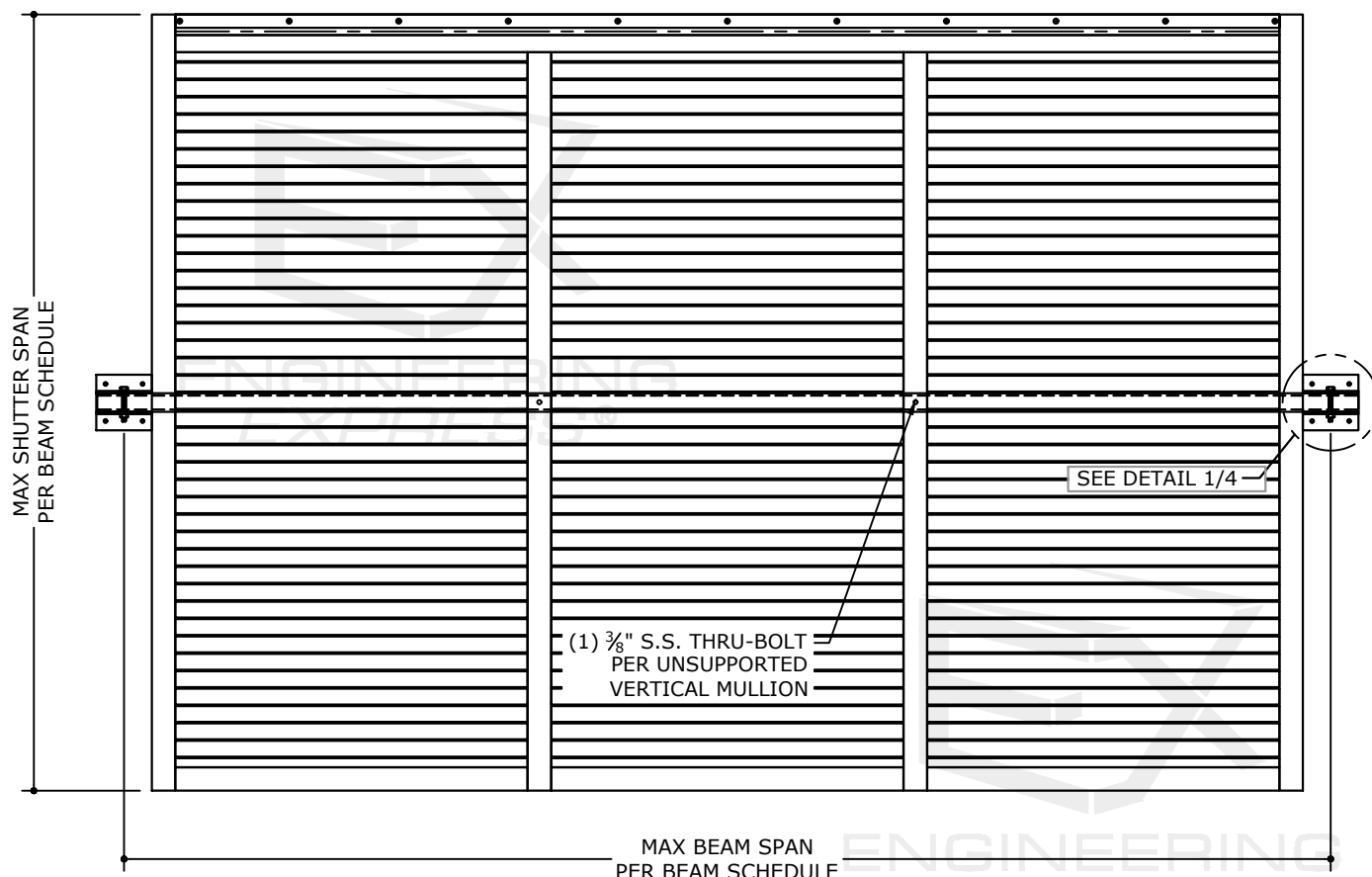


3 BEAM CONNECTION TO SHUTTER
3 N.T.S. VERTICAL SECTION

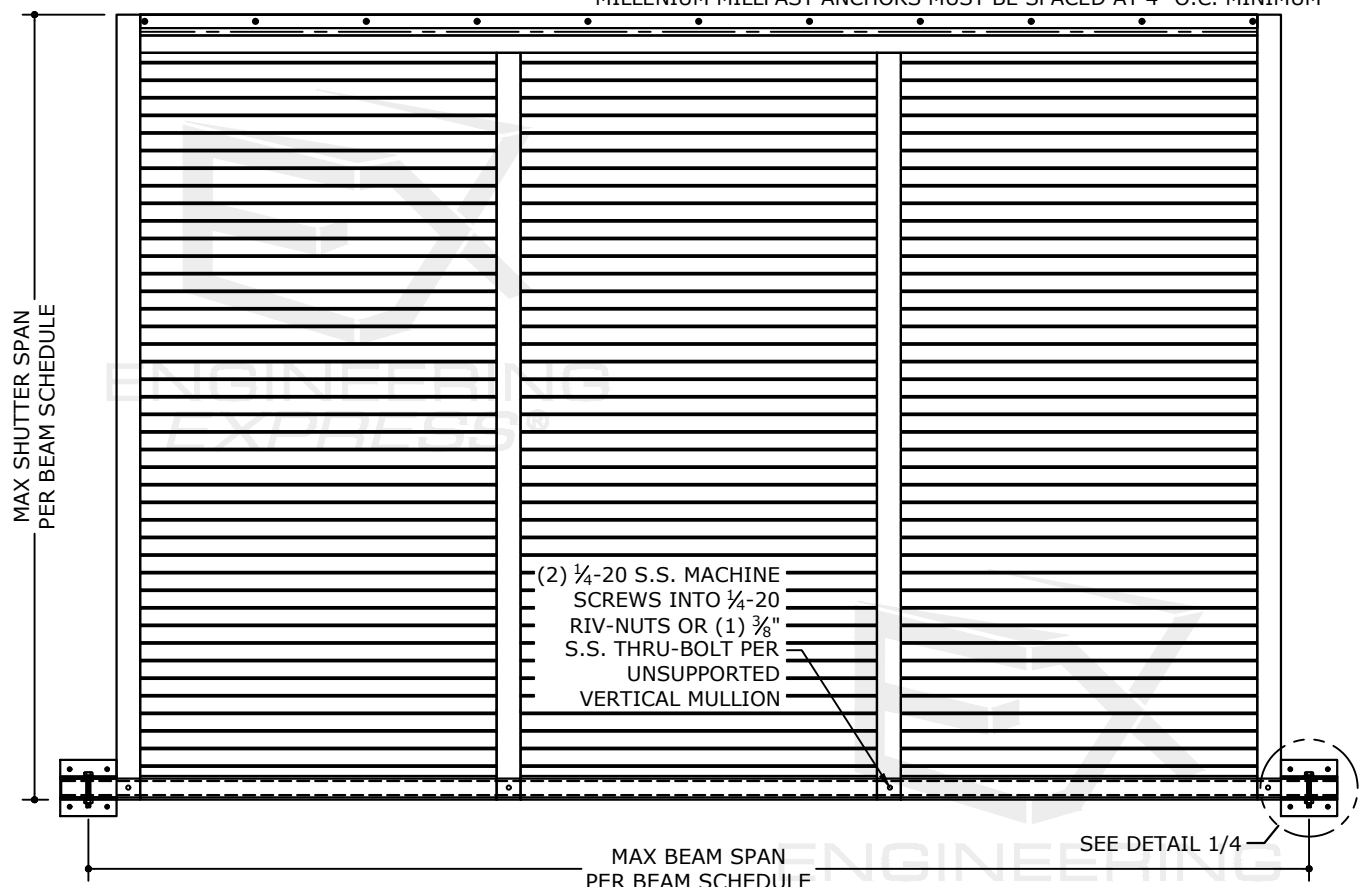
BEAM SCHEDULE:

BEAM SIZE	ALUMINUM ALLOY	SHUTTER SPAN	BEAM SPAN (+/- 40 PSF MAX)	BEAM SPAN (+/- 50 PSF MAX)	BEAM SPAN (+/- 60 PSF MAX)	BEAM SPAN (+/- 95 PSF MAX)	WALL BRACKET ANCHOR TYPES (+/-95 PSF MAX)			WALL BRACKET ANCHOR TYPES (+/-50 PSF MAX)		
							CONCRETE	HOLLOW BLOCK	WOOD (G=0.42 MIN)	CONCRETE	HOLLOW BLOCK	WOOD (G=0.42 MIN)
2"x3"x1/8"	6063-T6	8'-0"	7'-9"	7'-0"	6'-4"	5'-1"	A,B,C,D,E	A,C	B,C	A,B,C,D,E	A,B,C,E	B,C
		6'-8"	8'-7"	7'-8"	7'-0"	5'-7"	A,B,C,D,E	A,C,E	B,C	A,B,C,D,E	A,B,C,E	B,C
		5'-10"	9'-2"	8'-2"	7'-6"	5'-11"	A,B,C,D,E	A,B,C,E	B,C	A,B,C,D,E	A,B,C,D,E	B,C
		8'-0"	9'-7"	8'-7"	7'-10"	6'-3"	A,B,C,D,E	A,C	B,C	A,B,C,D,E	A,C,E	B,C
		6'-8"	10'-6"	9'-5"	8'-7"	6'-10"	A,B,C,D,E	A,C	B,C	A,B,C,D,E	A,B,C,E	B,C
		5'-10"	11'-3"	10'-1"	9'-2"	7'-4"	A,B,C,D,E	A,C	B,C	A,B,C,D,E	A,B,C,E	B,C
2"x4"x1/8"	6063-T6	8'-0"	11'-5"	10'-2"	9'-4"	7'-5"	A,B,C,D,E	A,C		A,B,C,D,E	A,C	B,C
		6'-8"	12'-6"	11'-2"	10'-2"	8'-1"	A,B,C,D,E	A,C		A,B,C,D,E	A,C	B,C
		5'-10"	13'-4"	11'-11"	10'-11"	8'-8"	A,B,C,D,E	A,C	B,C	A,B,C,D,E	A,C,E	B,C
		8'-0"	14'-10"	13'-3"	12'-2"	9'-8"	A,B,C			A,B,C,D,E	A,C	
		6'-8"	16'-3"	14'-7"	13'-3"	10'-7"	A,B,C,D,E			A,B,C,D,E	A,C	
		5'-10"	17'-5"	15'-7"	14'-2"	11'-3"	A,B,C,D,E	A		A,B,C,D,E	A,C	B,C
2"x4"x1/4"	6061-T6	8'-0"	9'-4"	8'-4"	7'-9"	6'-1"	A,B,C,D,E	A,C	B,C	A,B,C,D,E	A,B,C,E	B,C
		6'-8"	10'-3"	9'-2"	8'-4"	6'-8"	A,B,C,D,E	A,C	B,C	A,B,C,D,E	A,B,C,E	B,C
		5'-10"	10'-11"	9'-9"	8'-11"	7'-1"	A,B,C,D,E	A,C	B,C	A,B,C,D,E	A,B,C,E	B,C
		8'-0"	13'-4"	11'-11"	10'-11"	8'-8"	A,B,C,D,E	A,C	B,C	A,B,C,D,E	A,C,E	B,C
		6'-8"	12'-6"	11'-2"	10'-2"	8'-1"	A,B,C,D,E	A,C		A,B,C,D,E	A,C	B,C
		5'-10"	11'-3"	10'-1"	9'-2"	7'-4"	A,B,C,D,E	A,C	B,C	A,B,C,D,E	A,B,C,E	B,C
4"x2"x0.23"x0.15"	6063-T6	8'-0"	9'-4"	8'-4"	7'-9"	6'-1"	A,B,C,D,E	A,C	B,C	A,B,C,D,E	A,B,C,E	B,C
		6'-8"	10'-3"	9'-2"	8'-4"	6'-8"	A,B,C,D,E	A,C	B,C	A,B,C,D,E	A,B,C,E	B,C
		5'-10"	10'-11"	9'-9"	8'-11"	7'-1"	A,B,C,D,E	A,C	B,C	A,B,C,D,E	A,B,C,E	B,C
		8'-0"	13'-4"	11'-11"	10'-11"	8'-8"	A,B,C,D,E	A,C	B,C	A,B,C,D,E	A,C,E	B,C
		6'-8"	12'-6"	11'-2"	10'-2"	8'-1"	A,B,C,D,E	A,C		A,B,C,D,E	A,C	B,C
		5'-10"	11'-3"	10'-1"	9'-2"	7'-4"	A,B,C,D,E	A,C	B,C	A,B,C,D,E	A,B,C,E	B,C
6"x2"x0.29"x0.17"	6061-T6	8'-0"	17'-3"	15'-6"	14'-1"	11'-3"	A,B,C			A,B,C,D,E	A,C	
		6'-8"	16'-3"	14'-7"	13'-3"	10'-7"	A,B,C,D,E			A,B,C,D,E	A,C	
		5'-10"	17'-5"	15'-7"	14'-2"	11'-3"	A,B,C,D,E	A		A,B,C,D,E	A,C	B,C
		8'-0"	9'-4"	8'-4"	7'-9"	6'-1"	A,B,C,D,E	A,C	B,C	A,B,C,D,E	A,B,C,E	B,C
		6'-8"	10'-3"	9'-2"	8'-4"	6'-8"	A,B,C,D,E	A,C	B,C	A,B,C,D,E	A,B,C,E	B,C
		5'-10"	10'-11"	9'-9"	8'-11"	7'-1"	A,B,C,D,E	A,C	B,C	A,B,C,D,E	A,B,C,E	B,C

*MILLENNIUM MILLFAST ANCHORS MUST BE SPACED AT 4" O.C. MINIMUM



1 MID-SPAN BEAM (AS REQUIRED)
3 N.T.S. EXTER. ELEVATION



2 BOTTOM BEAM (OPTIONAL)
3 N.T.S. EXTER. ELEVATION

FL# 13434.1

EX ENGINEERING EXPRESS

POSTAL ADDRESS:
401 W. ATLANTIC AVE R10 BOX 219
DELRAY BEACH, FL 33444
ENGINEERINGEXPRESS.COM

Town & Country INDUSTRIES
Wholesale Aluminum and Building Products

400 WEST MCNAB ROAD, FT. LAUDERDALE, FL 33309
FULLVIEW & ULTRAVIEW BAHAMA SHUTTER
FLORIDA BUILDING CODE EIGHTH EDITION (2023)
FLORIDA STATEWIDE APPROVAL (FSA FL#13434.1)

REMARKS	DRWN	CHKD	DATE
2020 FBC (20-26176)	CCB	RWN	6/24/20
FBC 2023	MLD	CCB	8/16/23

23-64826

SCALE: NTS UNLESS NOTED

3

8/16/2023 1:56 PM MATTHEW c:\users\matthew\engineering\express\production - documents\projects\23-123-64826 multiple products 2023 fbc update fl 13434.2023 fbc\23-64826 - fl13434.1 - dwg.dwg

c:\users\matthew\engineering\express\production - documents\projects\23-123-64826 multiple products 2023 fbc update fl 13434\2023 fbc\23-64826 - fl13434.1 - dwg.dwg

COLBY BENNARDO, PE
PE# 95197 CA# 9885

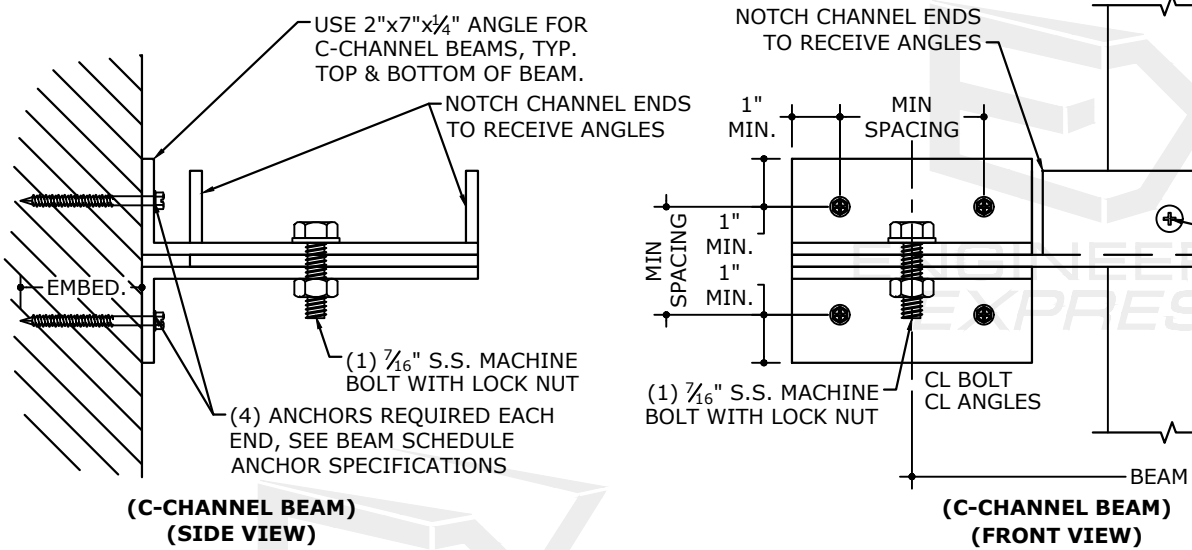
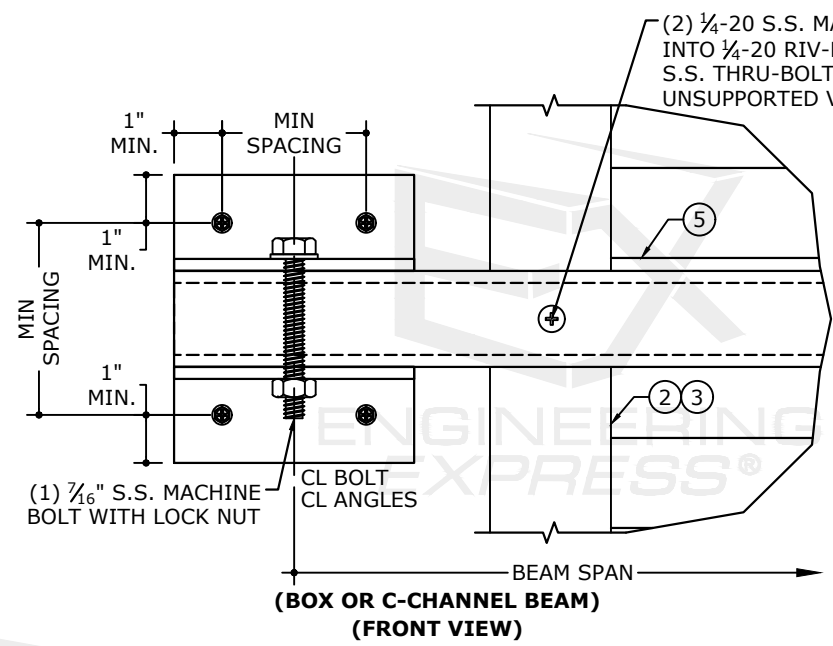
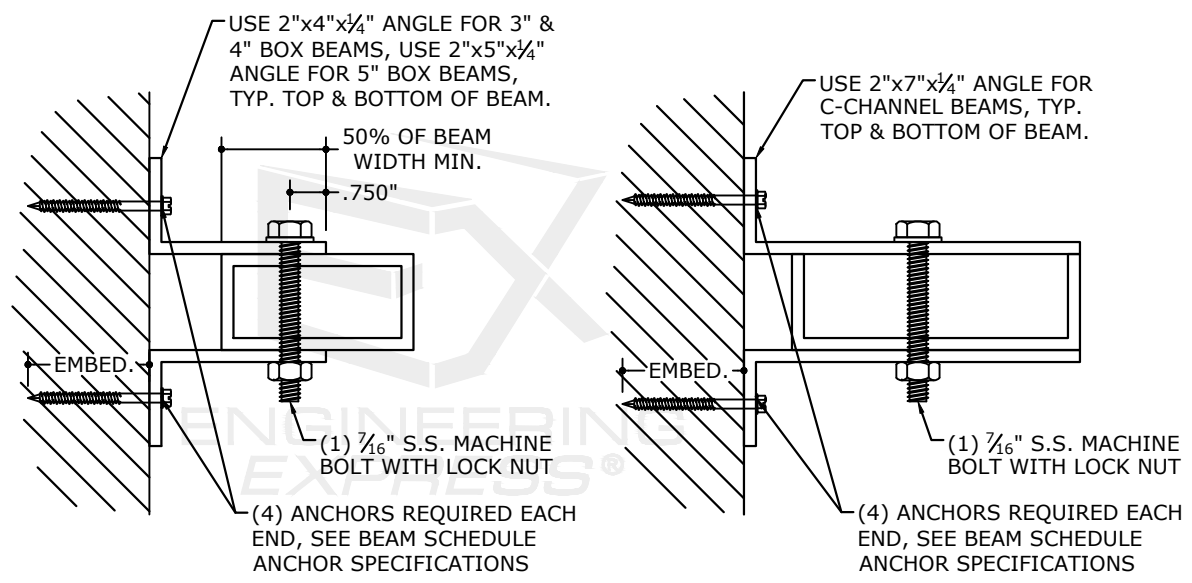
AUGUST 16, 2023

SPACE RESERVED FOR DIGITAL SEAL INFORMATION

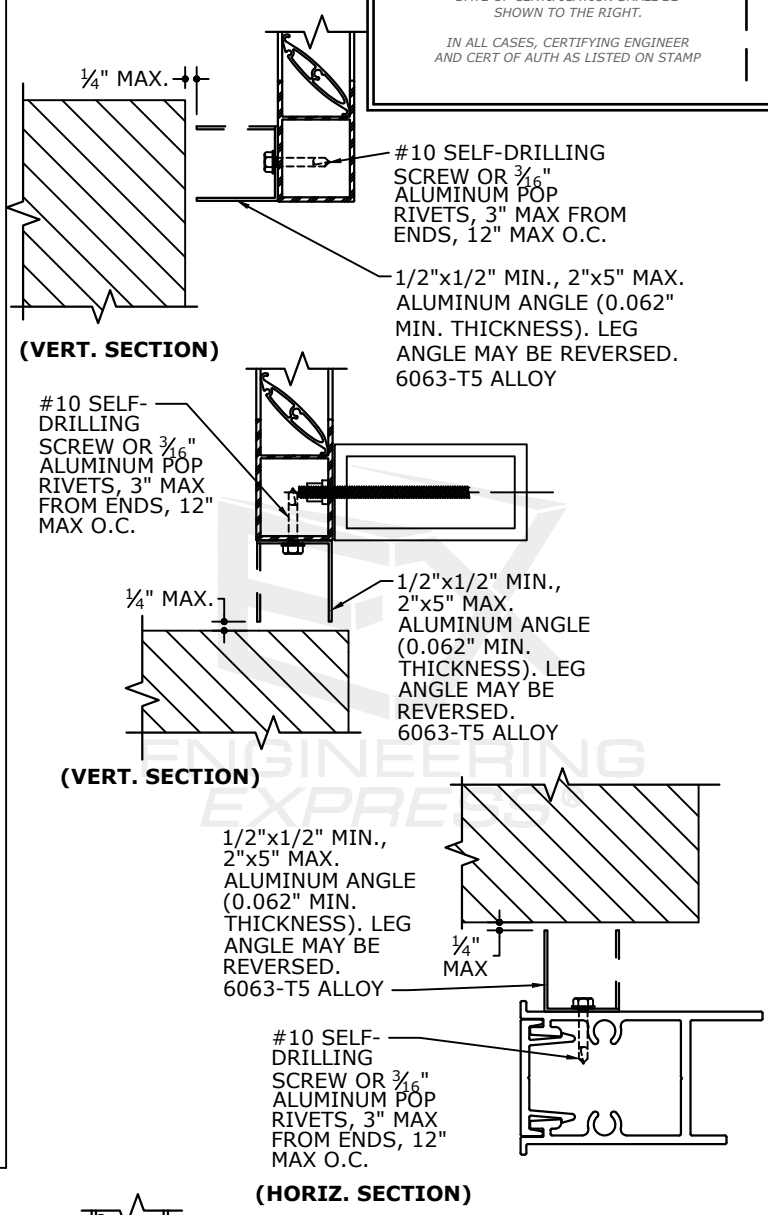
WHEN DIGITALLY SEALED, THIS NOTE SHALL BE FULLY COVERED ON SHEET 1

WHEN PRINTED OR PHYSICALLY SEALED, SEAL OF CERTIFYING ENGINEER, AND DATE OF CERTIFICATION SHALL BE SHOWN TO THE RIGHT.

IN ALL CASES, CERTIFYING ENGINEER AND CERT OF AUTH AS LISTED ON STAMP

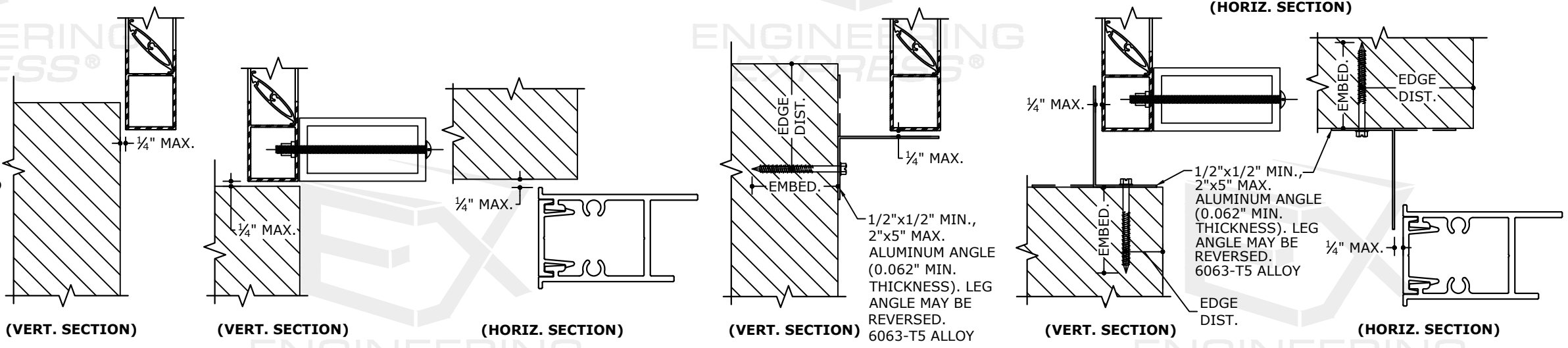


NOTE: 3" MIN SPACING FOR ANCHORS INTO CONCRETE/HOLLOW BLOCK HOST STRUCTURE. 1" MIN SPACING FOR ANCHORS INTO WOOD HOST STRUCTURE



1 WALL BRACKET CONNECTION OPTIONS
4 N.T.S. EXTER. ELEVATION

- SIDE CLOSURE NOTES**
- FOR INSTALLATIONS WITHIN THE HVHZ, IN LIEU OF SIDE CLOSURE ANGLE, SHUTTER MAY OVERLAP OPENING BY 1.5 X SHUTTER BUILD OUT DISTANCE.
 - ANCHORS MAY BE ANY ANCHOR FROM ANCHOR NOTE 1, ON SHEET 5, INSTALLED 3" MAX FROM EACH END, AND 12" O.C. MAX, OR 1/4" ITW TAPCONS WITH 1/2" MIN EDGE DISTANCE AND FULL THREAD ENGAGEMENT TO 1/16" MIN PLYWOOD INSTALLED 3" MAX FROM EACH END AND 7" O.C. MAX.
 - ANCHORS SHALL BE INSTALLED IN ACCORDANCE WITH MANUFACTURERS' RECOMMENDATIONS.
 - ALL CONCRETE ANCHORS SHALL BE INSTALLED TO NON-CRACKED CONCRETE ONLY.
 - MINIMUM EMBEDMENT SHALL BE AS NOTED IN ANCHOR NOTE 1 ON SHEET 5. MINIMUM EMBEDMENT AND EDGE DISTANCE EXCLUDES STUCCO, FOAM, BRICK, AND OTHER WALL FINISHES.
 - WHERE EXISTING STRUCTURE IS WOOD FRAMING, EXISTING CONDITIONS MAY VARY. FIELD VERIFY THAT FASTENERS ARE INTO ADEQUATE WOOD FRAMING MEMBERS, NOT INTO PLYWOOD.



2 SIDE CLOSURE DETAILS
4 N.T.S. SECTIONS

FL# 13434.1

ENGINEERING EXPRESS

POSTAL ADDRESS:
401 W. ATLANTIC AVE R10 BOX 219
DELRAY BEACH, FL 33444
ENGINEERINGEXPRESS.COM

Town & Country INDUSTRIES
Wholesale Aluminum and Building Products

400 WEST MCNAB ROAD, FT. LAUDERDALE, FL 33309
FULLVIEW & ULTRAVIEW BAHAMA SHUTTER
FLORIDA BUILDING CODE EIGHTH EDITION (2023)
FLORIDA STATEWIDE APPROVAL (FSA FL#13434.1)

DATE	DRWN	CHKD	DATE
6/24/20	CCB	RWN	6/24/20
8/16/23	MLD	CCB	8/16/23

REMARKS
2020 FBC (20-26176)
FBC 2023

COPYRIGHT ENGINEERING EXPRESS®

23-64826

SCALE: NTS UNLESS NOTED

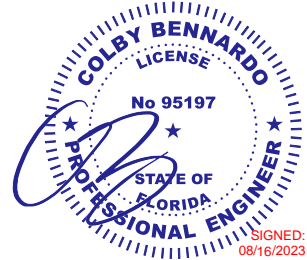
4 OF 6

SPACE RESERVED FOR DIGITAL SEAL INFORMATION

WHEN DIGITALLY SEALED, THIS NOTE SHALL BE FULLY COVERED ON SHEET 1

WHEN PRINTED OR PHYSICALLY SEALED, SEAL OF CERTIFYING ENGINEER, AND DATE OF CERTIFICATION SHALL BE SHOWN TO THE RIGHT.

IN ALL CASES, CERTIFYING ENGINEER AND CERT OF AUTH AS LISTED ON STAMP



ANCHOR NOTE 1: UNLESS NOTED OTHERWISE BELOW, ANCHORS AT 3" FROM ENDS AND 12" O.C. MAX (CHOOSE ONE FROM BELOW)

- CONNECTION IN CONCRETE:
 - ¼" ITW TAPCON WITH 1¾" MIN EMBED. AND 2½" MIN EDGE DIST. (3.19KSI MIN CONC.)
 - ¼" DEWALT ULTRACON W/ 1 ¼" EMBED AND 2 ½" MIN. EDGE DIST. (3.0KSI MIN CONC.)
 - ¼" DEWALT PANELMATES (MALE/FEMALE) WITH 1¾" MIN EMBED. AND 2½" MIN EDGE DIST. (3.32KSI MIN CONC.)
 - ¼"-20 ALL POINTS SOLID SET ANCHOR WITH 7/8" MIN EMBED. AND 2" MIN EDGE DIST. (3.0KSI MIN CONC.)
 - ¼" MILLENIUM MILLFAST (W/ T&C ULTRACOTE) WITH 1¾" EMBED AND 2½" EDGE DIST. (3.275KSI MIN)
 - #12 SMS W/ 2" EYEWALL ARMOR NYLON INSERT W/ 2" EMBED AND 2" EDGE DIST (2 KSI MIN)
- CONNECTION IN HOLLOW CONCRETE BLOCK:
 - ¼" ITW TAPCON WITH 1¾" MIN EMBED. AND 2½" MIN EDGE DIST., SPACED AT 4" O.C. MAX.
 - ¼" DEWALT ULTRACON W/ 1 ¼" EMBED AND 2 ½" MIN. EDGE DIST.
 - ¼" DEWALT PANELMATES (MALE/FEMALE) WITH 1¾" MIN EMBED. AND 2½" MIN EDGE DIST., SPACED AT 6½" O.C. MAX.
 - ¼"-20 ALL POINTS SOLID SET ANCHOR WITH 7/8" MIN EMBED. AND 2" MIN EDGE DIST., SPACED AT 8½" O.C. MAX.
 - ¼" MILLENIUM MILLFAST (W/ T&C ULTRACOTE) WITH 1¾" EMBED AND 2½" EDGE DIST., SPACED AT 4½" O.C. MAX
 - #12 SMS W/ 2" EYEWALL ARMOR NYLON INSERT W/ 1¼" EMBED AND 2" EDGE DIST., SPACED AT 7" O.C. MAX
- CONNECTION IN WOOD (G=0.42 MIN):
 - ¼" LAG SCREW WITH 1½" MIN EMBED. AND ¾" MIN EDGE DIST.
 - #14 SHEET METAL SCREW WITH 1½" MIN EMBED. AND ¾" MIN EDGE DIST.

ANCHOR NOTE 2: CHOOSE ONE ANCHOR TYPE FROM BELOW, INSTALL QTY SHOWN

- CONNECTION IN CONCRETE:
 - (2) ¼" ITW TAPCON WITH 1¾" MIN EMBED. AND 2½" MIN EDGE DIST. (3.19KSI MIN CONC.)
 - (2) ¼" DEWALT PANELMATES (MALE/FEMALE) WITH 1¾" MIN EMBED. AND 2½" MIN EDGE DIST. (3.32KSI MIN CONC.)
 - (2) ¼"-20 ALL POINTS SOLID SET ANCHOR WITH 7/8" MIN EMBED. AND 2" MIN EDGE DIST. (3.0KSI MIN CONC.)
 - (2) ¼" MILLENIUM MILLFAST (W/ T&C ULTRACOTE) WITH 1¾" EMBED AND 2½" EDGE DIST. (3.275KSI MIN)
 - (2) #12 SMS W/ 2" EYEWALL ARMOR NYLON INSERT W/ 2" EMBED AND 2" EDGE DIST (2 KSI MIN)

NOTE: ALL 69" MAXIMUM SHUTTER SPAN INSTALLATIONS WITH MULTI-PANEL SPANS WITHOUT STORM BARS AT -95PSF REQUIRE A QUANTITY OF (3) ANCHORS FROM THE OPTIONS ABOVE
- CONNECTION IN WOOD (G=0.42 MIN):
 - (2) ¼" EYEWALL ARMOR MALE OR FEMALE BOLT WITH 1⅞" MIN EMBED. AND ¾" MIN EDGE DIST.
 - (3) ¼" DEWALT PANELMATE (MALE/FEMALE) WITH 1⅞" MIN EMBED. AND ¾" MIN EDGE DIST.
 - (2) ¼" STAINLESS STEEL HANGER BOLT WITH 1¼" MIN EMBED. AND ¾" MIN EDGE DIST.

NOTE: ALL 69" MAXIMUM SHUTTER SPAN INSTALLATIONS WITH MULTI-PANEL SPANS WITHOUT STORM BARS AT -95PSF REQUIRE A QUANTITY OF (3) ANCHORS FROM THE OPTIONS ABOVE
- CONNECTION IN HOLLOW CONCRETE BLOCK**:
 - SEE ANCHOR SCHEDULE BELOW FOR APPLICABILITY OF ANCHORS TO BE INSTALLED. EACH HOLLOW CONCRETE BLOCK ANCHOR IS CLASSIFIED WITH A LETTER AS SHOWN BELOW ACCOMPANIED BY A NUMBER INDICATING THE QUANTITY OF ANCHORS REQUIRED FOR INSTALLATION. THE DESIGN TABLE ILLUSTRATED BELOW APPLIES TO HOLLOW CONCRETE BLOCK ANCHORS ONLY.
 - TYPE (w) : ¼" ITW TAPCON WITH 1¼" MIN EMBED. AND 2½" MIN EDGE DIST.
 - TYPE (x) : ¼" EYEWALL ARMOR MALE OR FEMALE BOLT W/ 1¼" MIN EMBED. AND 2½" MIN EDGE DIST.
 - TYPE (y) : ¼" DEWALT PANELMATES (MALE/FEMALE) WITH 1¼" MIN EMBED. AND 2½" MIN EDGE DIST.
 - TYPE (z) : ¼"-20 ALL POINTS SOLID SET ANCHOR WITH 7/8" MIN EMBED. AND 2" MIN EDGE DIST.
 - TYPE (u) : ¼" MILLENIUM MILLFAST (W/ T&C ULTRACOTE) WITH 1¼" EMBED AND 2½" EDGE DIST.
 - TYPE (v) : #12 SMS W/ 2" EYEWALL ARMOR NYLON INSERT W/ 1¼" EMBED AND 2" EDGE DIST

MAX (-) PRESSURE	69" MAXIMUM SHUTTER SPAN			81-5/8" MAXIMUM SHUTTER SPAN			96-3/4" MAXIMUM SHUTTER SPAN		
	SINGLE PANEL SPAN	MULTI-PANEL SPAN		SINGLE PANEL	MULTI-PANEL SPAN		SINGLE PANEL	MULTI-PANEL SPAN	
		W/O BAR	W/BAR		W/O BAR	W/BAR		W/O BAR	W/BAR
-50 PSF	(w3) (x2) (y2) (z2) (u3) (v2)	(x2) (y3) (z2) (v2)	(w2) (x2) (y2) (z2) (u2) (v2)	(x2) (y2) (z2) (u3) (v2)	(x2) (y3) (z2) (v3)	(w3) (x2) (y2) (z2) (u2) (v2)	(w3) (x2) (y2) (z2) (u3) (v2)	(x2) (z3) (v3)	(w3) (x2) (y2) (z2) (u3) (v2)
-60 PSF	(x2) (y3) (z2) (u3) (v2)	(x2) (y3) (z2) (v3)	(w3) (x2) (y2) (z2) (u2) (v2)	(x2) (y3) (z2) (v3)	N/A	(w3) (x2) (y2) (z2) (u3) (v2)	(w3) (x2) (y2) (z2) (u3) (v2)	N/A	(w3) (x2) (y2) (z2) (u3) (v2)
-70 PSF	(x2) (y3) (z2) (v3)	(x2) (z3) (v3)	(w3) (x2) (y2) (z2) (u3) (v2)	(x2) (y3) (z3) (v3)	N/A	(w3) (x2) (y2) (z2) (u3) (v2)	(x2) (y3) (z2) (v2)	N/A	(x2) (y3) (z2) (v2)
-95 PSF	(x2) (z3) (v3)	(x3)	(x2) (y3) (z2) (u3) (v2)	(x3) (z3)	N/A	(x2) (y3) (z2) (v3)	(x2) (y3) (z3) (v3)	N/A	(x2) (y3) (z3) (v3)

**HOLLOW BLOCK ANCHOR SCHEDULE KEY: w3 = ANCHOR TYPE "w" WITH "3" ANCHORS.

ANCHOR NOTE 3: CHOOSE ONE ANCHOR TYPE FROM BELOW, INSTALL QTY SHOWN

- CONNECTION IN CONCRETE:
 - (1) ¼" ITW TAPCON WITH 1¾" MIN EMBED. AND 2½" MIN EDGE DIST. (3.19KSI MIN CONC.)
 - (1) ¼" DEWALT ULTRACON WITH 1¾" MIN EMBED. AND 2½" MIN EDGE DIST. (3.0KSI MIN CONC.)
 - (1) ¼"-20 ALL POINTS SOLID SET ANCHOR WITH 7/8" MIN EMBED. AND 3" MIN EDGE DIST. (3.0KSI MIN CONC.)
 - (1) ¼" MILLENIUM MILLFAST (W/ T&C ULTRACOTE) WITH 1¾" EMBED AND 2½" EDGE DIST. (3.275KSI MIN)
 - (1) #12 SMS W/ 2" EYEWALL ARMOR NYLON INSERT W/ 2" EMBED AND 2" EDGE DIST (2 KSI MIN)
- CONNECTION IN HOLLOW CONCRETE BLOCK:
 - (2) ¼" DEWALT ULTRACONS WITH 1¼" MIN EMBED. AND 2½" MIN EDGE DIST.
 - (2) ¼"-20 ALL POINTS SOLID SET ANCHOR WITH 7/8" MIN EMBED. AND 3" MIN EDGE DIST.
 - (2) ¼" MILLENIUM MILLFAST (W/ T&C ULTRACOTE) WITH 1¾" EMBED AND 2½" EDGE DIST. (3.275KSI MIN)
 - (2) #12 SMS W/ 2" EYEWALL ARMOR NYLON INSERT W/ 2" EMBED AND 2" EDGE DIST (2 KSI MIN)
- CONNECTION IN WOOD (G=0.42 MIN):
 - (1) ¼" LAG SCREW WITH 1½" MIN EMBED. AND ¾" MIN EDGE DIST.
 - (1) #14 SHEET METAL SCREW WITH 1½" MIN EMBED. AND ¾" MIN EDGE DIST.

FL# 13434.1

ENGINEERING EXPRESS
 POSTAL ADDRESS:
 401 W. ATLANTIC AVE R10 BOX 219
 DELRAY BEACH, FL 33444
 ENGINEERINGEXPRESS.COM

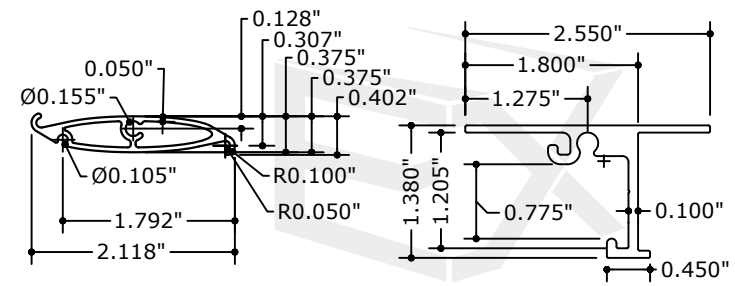
Town & Country INDUSTRIES
 Wholesale Aluminum and Building Products
 400 WEST MCNAB ROAD, FT. LAUDERDALE, FL 33309
 FULLVIEW & ULTRAVIEW BAHAMA SHUTTER
 FLORIDA BUILDING CODE EIGHTH EDITION (2023)
 FLORIDA STATEWIDE APPROVAL (FSA FL#13434.1)

REMARKS	DRWN	CHKD	DATE
2020 FBC (20-26176)	CCB	RWN	6/24/20
FBC 2023	MLD	CCB	8/16/23

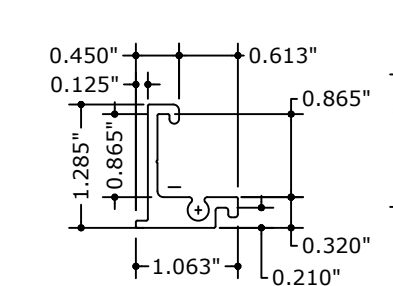
23-64826

SCALE: NTS UNLESS NOTED

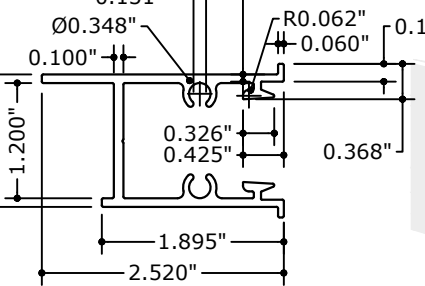
EXTRUSIONS



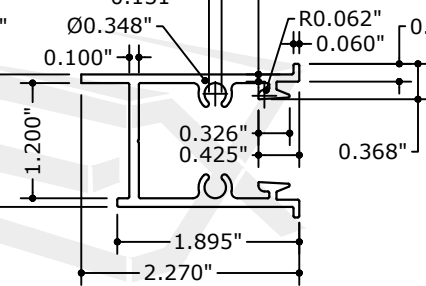
1a 2" BLADE
6" = 1'-0"



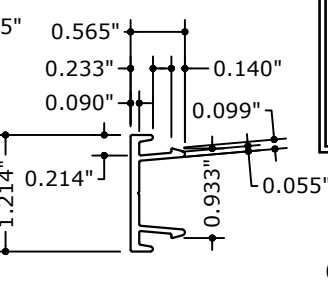
2 FEMALE MULLION
6" = 1'-0"



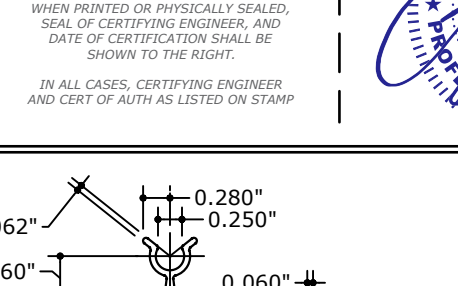
3 MALE MULLION
6" = 1'-0"



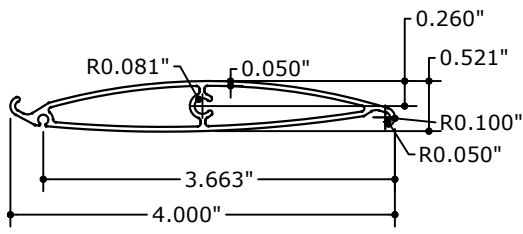
4 JAMB
6" = 1'-0"



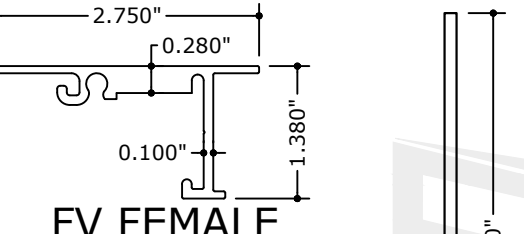
4a FV JAMB
6" = 1'-0"



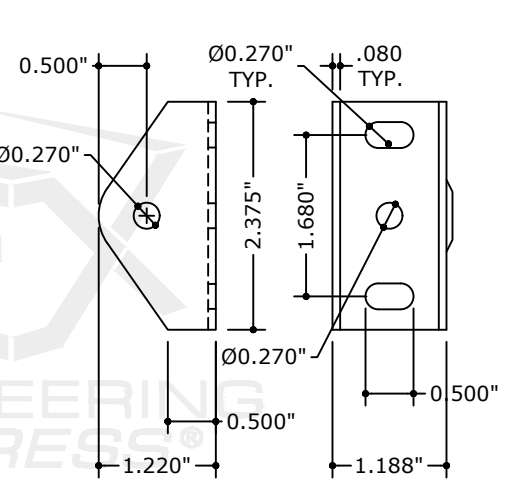
5 JAMB SNAP
6" = 1'-0"



1b 4" BLADE
6" = 1'-0"

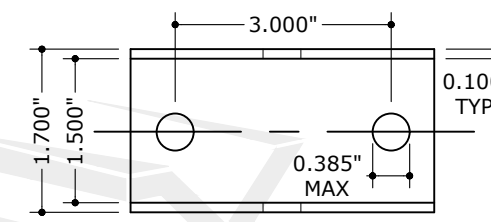
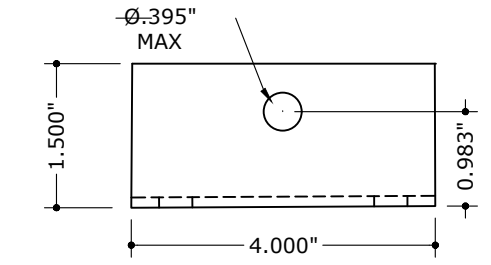


2a FV FEMALE MULLION
6" = 1'-0"



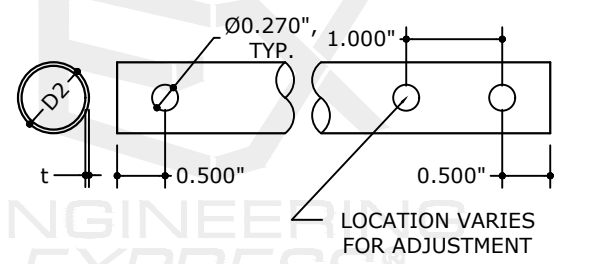
13a L CAMEL BACK HINGE
6" = 1'-0"

PIPE (ARM) SCHEDULE					
OUTER TUBE			INNER TUBE		
OUTSIDE DIAM.	INSIDE DIAM.	WALL	OUTSIDE DIAM.	INSIDE DIAM.	WALL
1.000"	0.900"	0.050"	0.875"	0.775"	0.050"

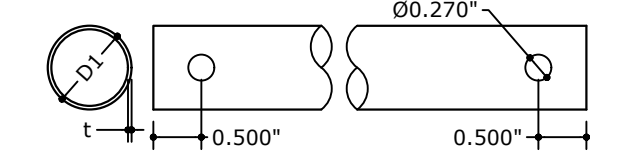


13b "U" WALL BRACKET

6 HEADER
6" = 1'-0"

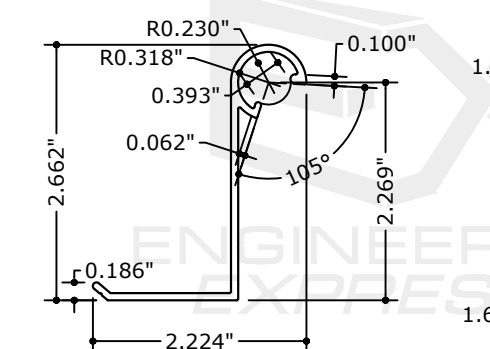


14 ALUMINUM PIPE (INNER)
6" = 1'-0"

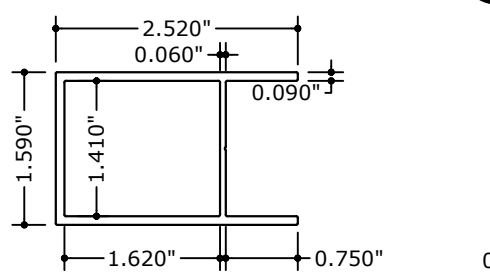


15 ALUMINUM PIPE (OUTER)
6" = 1'-0"

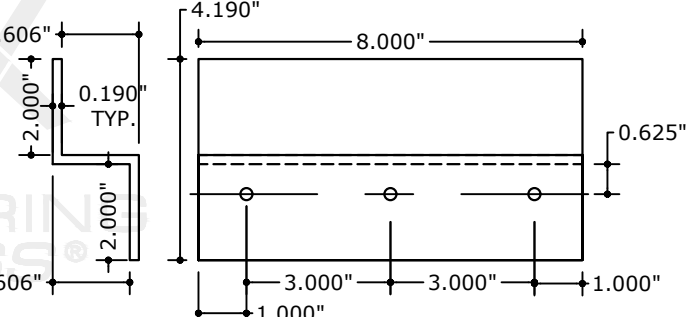
3a FV MALE MULLION
6" = 1'-0"



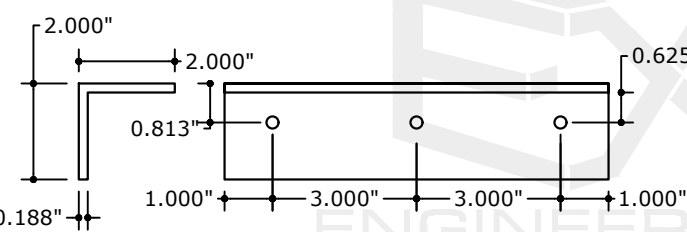
7 HEADER HINGE
6" = 1'-0"



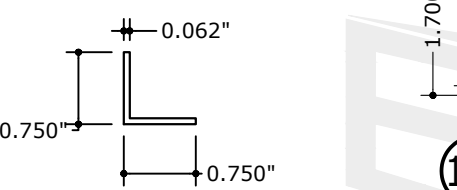
8 SILL
6" = 1'-0"



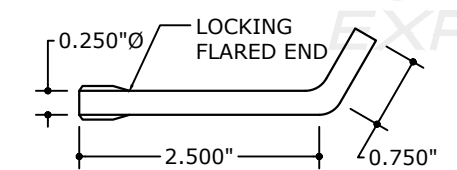
10 "Z" BAR - PROFILE & LAYOUT
3" = 1'-0"



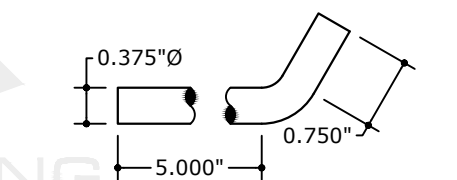
12 ANGLE - PROFILE & LAYOUT
3" = 1'-0"



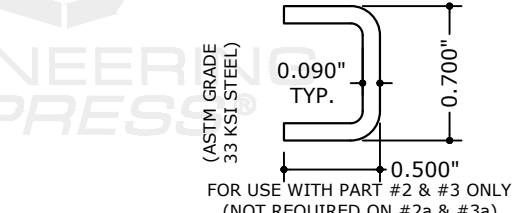
9 ANGLE
6" = 1'-0"



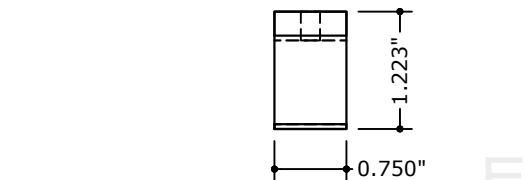
17 L-PIN - 1/4"Ø
6" = 1'-0"



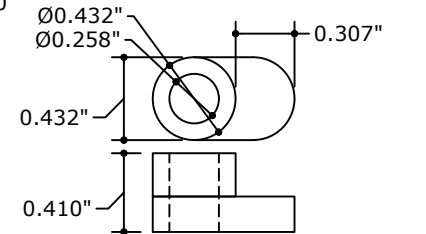
18 L-PIN - 3/8"Ø
6" = 1'-0"



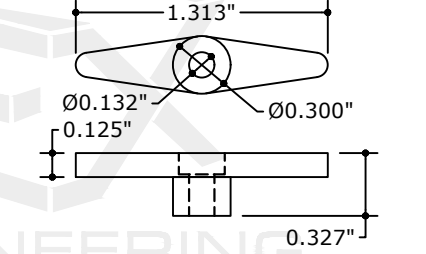
19 GALV. STEEL BENT PLATE INSERT FOR MULLION
6" = 1'-0"



21 TENSION RING
6" = 1'-0"



20 TAB STOP
6" = 1'-0"



22 ALT. TAB STOP
6" = 1'-0"

COLBY BENNARDO, PE
PE# 95197 CA# 9885

SPACE RESERVED FOR DIGITAL SEAL INFORMATION

WHEN DIGITALLY SEALED, THIS NOTE SHALL BE FULLY COVERED ON SHEET 1

WHEN PRINTED OR PHYSICALLY SEALED, SEAL OF CERTIFYING ENGINEER, AND DATE OF CERTIFICATION SHALL BE SHOWN TO THE RIGHT.

IN ALL CASES, CERTIFYING ENGINEER AND CERT OF AUTH AS LISTED ON STAMP

COLBY BENNARDO
LICENSE
No 95197
STATE OF FLORIDA
PROFESSIONAL ENGINEER
SIGNED: 08/16/2023

FL# 13434.1

ENGINEERING EXPRESS

POSTAL ADDRESS:
401 W. ATLANTIC AVE R10 BOX 219
DELRAY BEACH, FL 33444
ENGINEERINGEXPRESS.COM

Town & Country INDUSTRIES
Wholesale Aluminum and Building Products

400 WEST MCNAB ROAD, FT. LAUDERDALE, FL 33309
FULLVIEW & ULTRAVIEW BAHAMA SHUTTER
FLORIDA BUILDING CODE EIGHTH EDITION (2023)
FLORIDA STATEWIDE APPROVAL (FSA #13434.1)

DATE	DRWN	CHKD	DATE
6/24/20	CCB	RWN	6/24/20
8/16/23	MLD	CCB	8/16/23

REMARKS
2020 FBC (20-26176)
FBC 2023

23-64826

SCALE: NTS UNLESS NOTED

6 OF 6